

CRICOS Provider No.: 00650K



www.lcgs.tas.edu.au

Button Street Mowbray Heights 7248 Tasmania Australia
P: 03 6336 6000 F: 03 6336 5980 E: senior@lcgs.tas.edu.au



Launceston
Church
Grammar
School



Strategic Plan
2011 - 2020

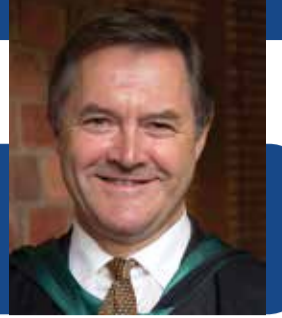
Strategic Plan 2011-2020

From the Board Chairman and Headmaster

The 2011- 2020 Launceston Church Grammar School Strategic Plan was the product of a two-day school community consultation meeting held in August 2010. Over 70 people representing various stakeholders of the School came together to create the foundations of our Strategic Plan.



Michael Bennett: Chairman



Stephen Norris: Headmaster

Since its introduction, in 2011, the plan has driven essential decision making and has had a profound influence on the strategic direction of the School. The plan is a constant point of reference and has given rise to a remarkable number and range of educational innovations and improvements.

A mid-term strategic plan review has recently been conducted which gives rise to this document. The review involved both members of the School Board and Senior Management. Appropriate refinements, redefinition and extrapolations have been applied to the original ideas and are reflected in the current document. This document will continue to drive the future of the School over the second five years of the plan. We strongly recommend it to all sections of the Launceston Grammar community.

Global Leader in Education

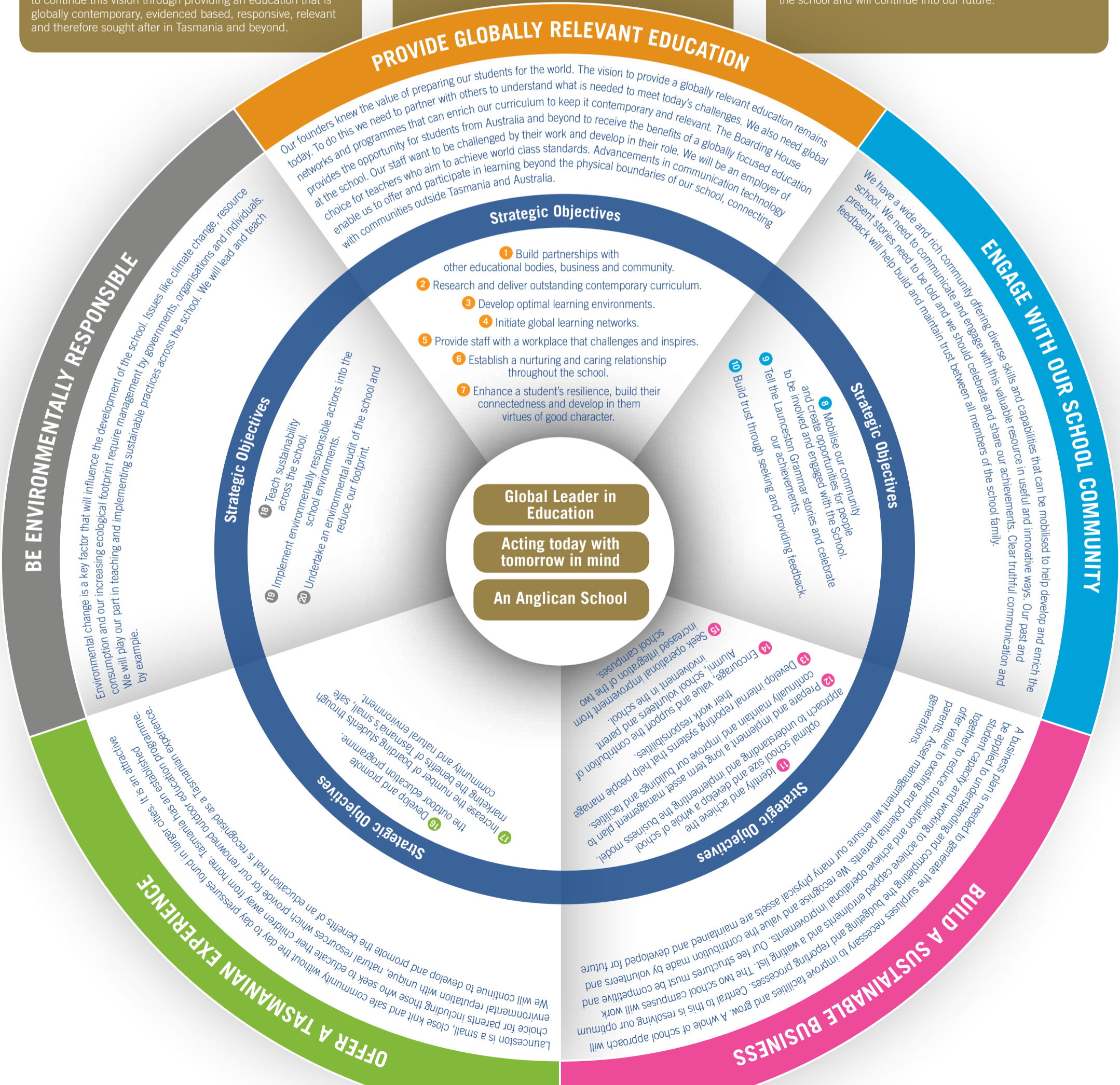
The School's founders aimed to prepare and encourage young people to think constructively and purposefully about the world and the part they may play in making it a better place. We aim to continue this vision through providing an education that is globally contemporary, evidenced based, responsive, relevant and therefore sought after in Tasmania and beyond.

Acting today with tomorrow in mind

The decisions we take today must sustain our school, environmentally, financially, socially, physically and spiritually. We must act with the whole community in mind.

An Anglican School

We have had a close and enduring relationship with the Anglican Church in Tasmania since our beginning in 1846. That relationship helps define our core values, is an integral part of the school and will continue into our future.



Our Values

- Act according to the belief that each individual is uniquely important and valued
- Be thoughtful and sensitive to the needs of others
- Build confidence and self reliance
- Show a strong sense of responsibility for our community
- Nurture and inspire our people